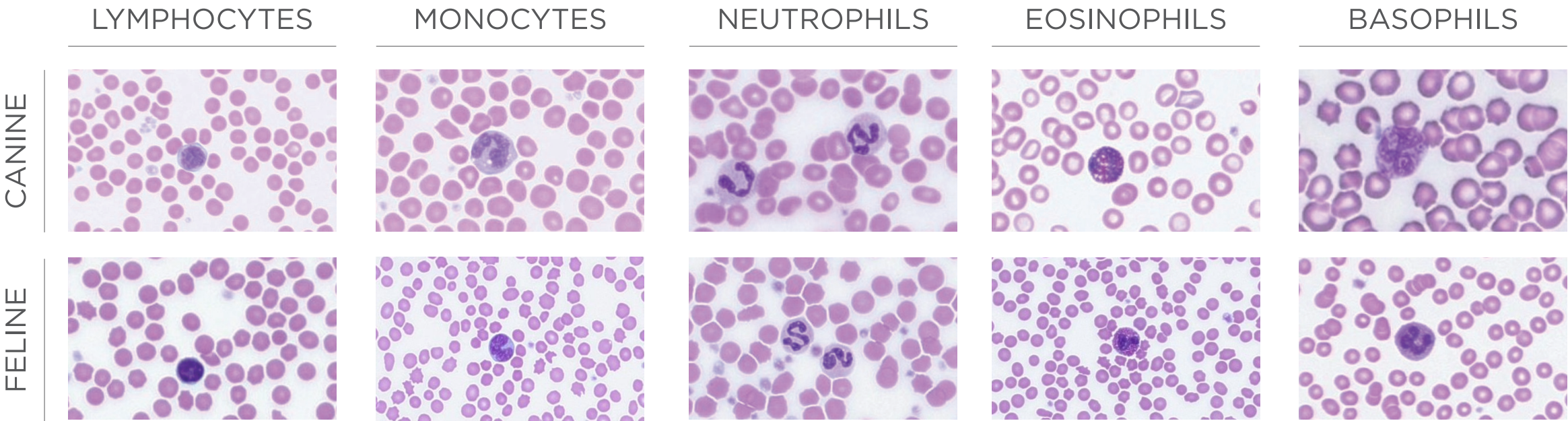


# vetscan IMAGYST™

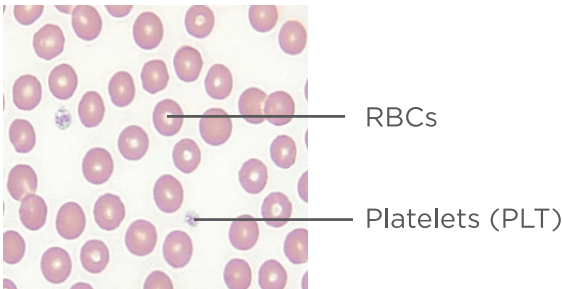
## Blood Smear Evaluation Basics

All images used modified Wright's stain and were taken with VETSCAN IMAGYST™ unless otherwise noted.

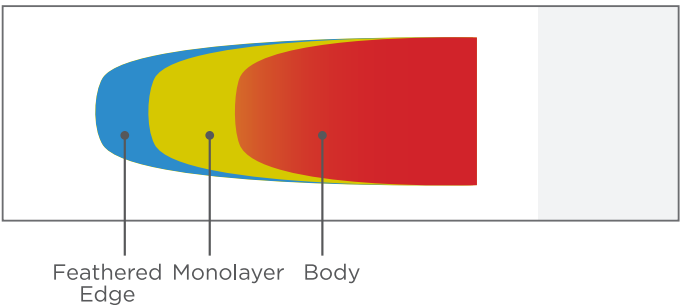
### WHITE BLOOD CELLS (WBCs; LEUKOCYTES)



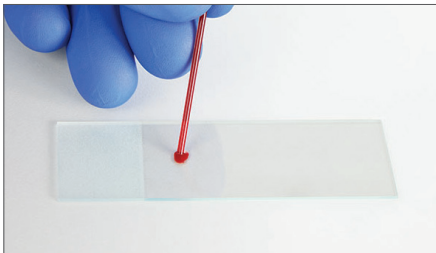
### RED BLOOD CELLS (RBCs; ERYTHROCYTES)\*



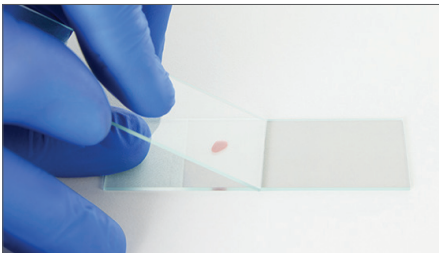
### BLOOD SMEAR SCHEMATIC



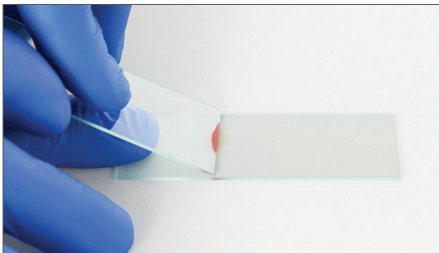
### PREPARING A BLOOD SMEAR



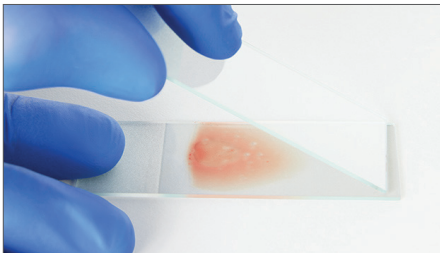
Place a droplet of blood near frosted end of slide using a microhematocrit capillary tube or micropipette. Do not use a wooden stick as PLT and WBCs may adhere to it.



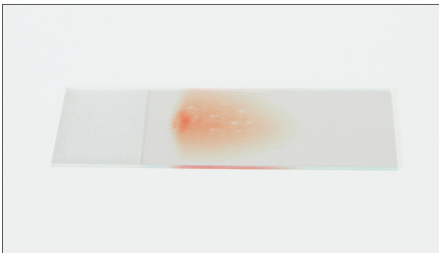
Place the spreader slide in front of the blood droplet at a 30° to 45° angle.



Draw spreader slide back to meet the blood droplet, allowing blood to spread toward edges of spreader slide. Do not allow blood to fully extend to slide edges.



Push spreader slide forward along the bottom slide without losing contact with the bottom slide.



Blood smear should cover 1/2 to 3/4 of the bottom slide.

With artificial intelligence (AI)-driven analysis, **VETSCAN IMAGYST efficiently provides critical data** to supplement complete blood count (CBC) results and help guide diagnosis and treatment.

\*Image used with permission from Sink, Feldman. *Laboratory Urinalysis and Hematology for the Small Animal Practitioner*. © 2004 Teton NewMedia.

All trademarks are the property of Zoetis Services LLC or a related company or a licensor unless otherwise noted. © 2022 Zoetis Services LLC. All rights reserved. VTS-00727

### COMPLETING A BLOOD SMEAR TEST

- 01

**PREPARE BLOOD SMEAR**
  - Prepare a blood smear slide with a Romanowsky-type stain using industry best practices
  - Include a label or handwritten note on the slide to identify the patient
  - See additional details on subsequent pages
- 02

**ADD NEW TEST**
  - Log in to VETSCAN IMAGYST
  - Choose the correct sample and select **SCAN**. Sample information will come prepopulated from any FUSE-connected software system
  - If no integration is available, select **ADD TEST (+)**
  - Enter all required information and then select **CREATE**
- 03

**COMPLETE PATIENT HISTORY**
  - Enter the RBC count from the automated CBC report. This is important to ensure the polychromatophils are analyzed correctly
- 04

**ADD SCAN**
  - Select an available scanner
  - Select **OPEN TRAY** and place blood smear slide on the tray, locking it in place
- 05

**CREATE SCAN AREA**
  - Select **PREVIEW** and review the suggested scan area
  - Accept the suggested scan area or create a custom scan area to reduce the scan time. Select **CONTINUE** when you are satisfied with the scan area
  - Select **DELETE (X)** to remove a scan
- 06

**SUBMIT ORDER**
  - Select **SUBMIT ORDER**
- 07

**REVIEW TESTS**
  - When a test is ready to be reviewed, select **READY FOR REVIEW**
  - Find the desired test and select **REVIEW**
  - Review the findings
  - Click on **FINALIZE** and the test will move to **TEST HISTORY**
- 08

**ADD-ON EXPERT REVIEW**
  - Select **ADD NEW TEST (+)** to submit image for expert review by a clinical pathologist
  - Choose the sample that needs to be reviewed
  - To assist the pathologist with their diagnosis, attach history documents (.pdf) or photos (.jpeg)
  - Find the desired test and select **REVIEW\***

#### INCOMPLETE TESTS

1328 Cody  
Add-On Expert Review Test ID: 313355 11/18/2021 4:48 PM Species: Canine

Incomplete Test Order

OPEN

- An incomplete or unsubmitted test will display with an **INCOMPLETE TEST ORDER** status in the Inbox
- Select **OPEN** to complete all required fields
- Review steps 3-7

\*Additional costs may apply.

Contact your Zoetis representative for assistance.

